



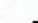




## 2017 URFC Fisheries Monitoring Report

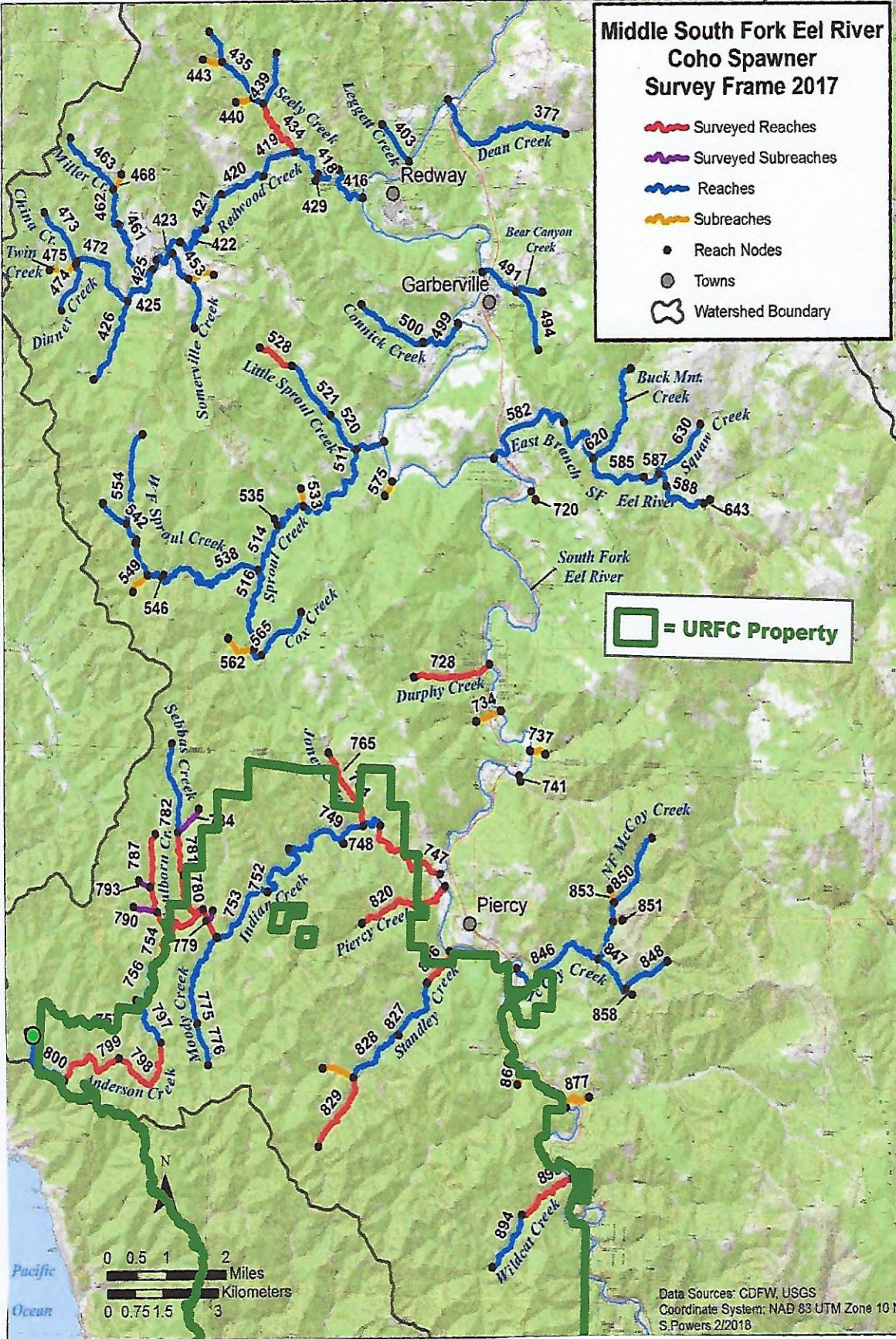
During 2017, approximately 3250 feet of class I and class II habitat were evaluated as part of the THP preparation on the Usal Redwood Forest Company (URFC) ownership. No class II habitat was upgraded to class I (see table below), however, several short sections (Typically less than 100' each) of class III watercourses were upgraded to Class II watercourses. Also in 2017, the California Department of Fish and Wildlife continued to conduct Salmonid Spawning surveys on URFC lands (see attached map).

Watercourse Name	Class II Survey Length	Class I Survey Length	Length of Class II Upgraded to Class I
Mule Cr Tributary	1,750	3,250	0
Totals (ft)	1,750	3,250	0
Totals (mi)	0.33	0.62	0

# Middle South Fork Eel River Coho Spawner Survey Frame 2017

-  Surveyed Reaches
-  Surveyed Subreaches
-  Reaches
-  Subreaches
-  Reach Nodes
-  Towns
-  Watershed Boundary

 = URFC Property



Data Sources: CDFW, USGS  
 Coordinate System: NAD 83 UTM Zone 10 N  
 S.Powers 2/2018