

2014 URFC Fisheries Monitoring Report

During 2014 Campbell Global (CG) evaluated over 5.5 miles of class I and class II habitat on the Usal Redwood Forest Company (URFC) ownership. As a result of the evaluations almost two miles of previously designated class II habitat was upgraded to class I (see table below). Also in 2014, CG staff created Aquatic Resource Reports for six THPs. The California Department of Fish and Wildlife continued to conduct Salmonid Spawning surveys on URFC lands (see attached map).

Watercourse Name	Class II Survey Length	Class I Survey Length	Length of Class II Upgraded to Class I
Little Bear	779	500	
Bear	387	2,492	1,891
Mule	1,736	6,647	6,047
South Fork Usal	2,488	2,851	2,351
North Fork Usal	5,600		
Totals (ft)	10,990	12,490	10,289
Totals (mi)	2.1	2.4	1.9

South Fork Eel River Coho Spawner Surveys Selected Streams

Live Fish

SPECIES

- Chinook salmon
- coho salmon
- steelhead
- unidentified species

Known Redds

SPECIES

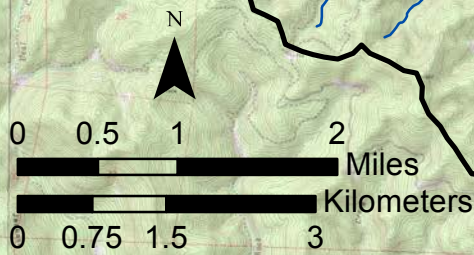
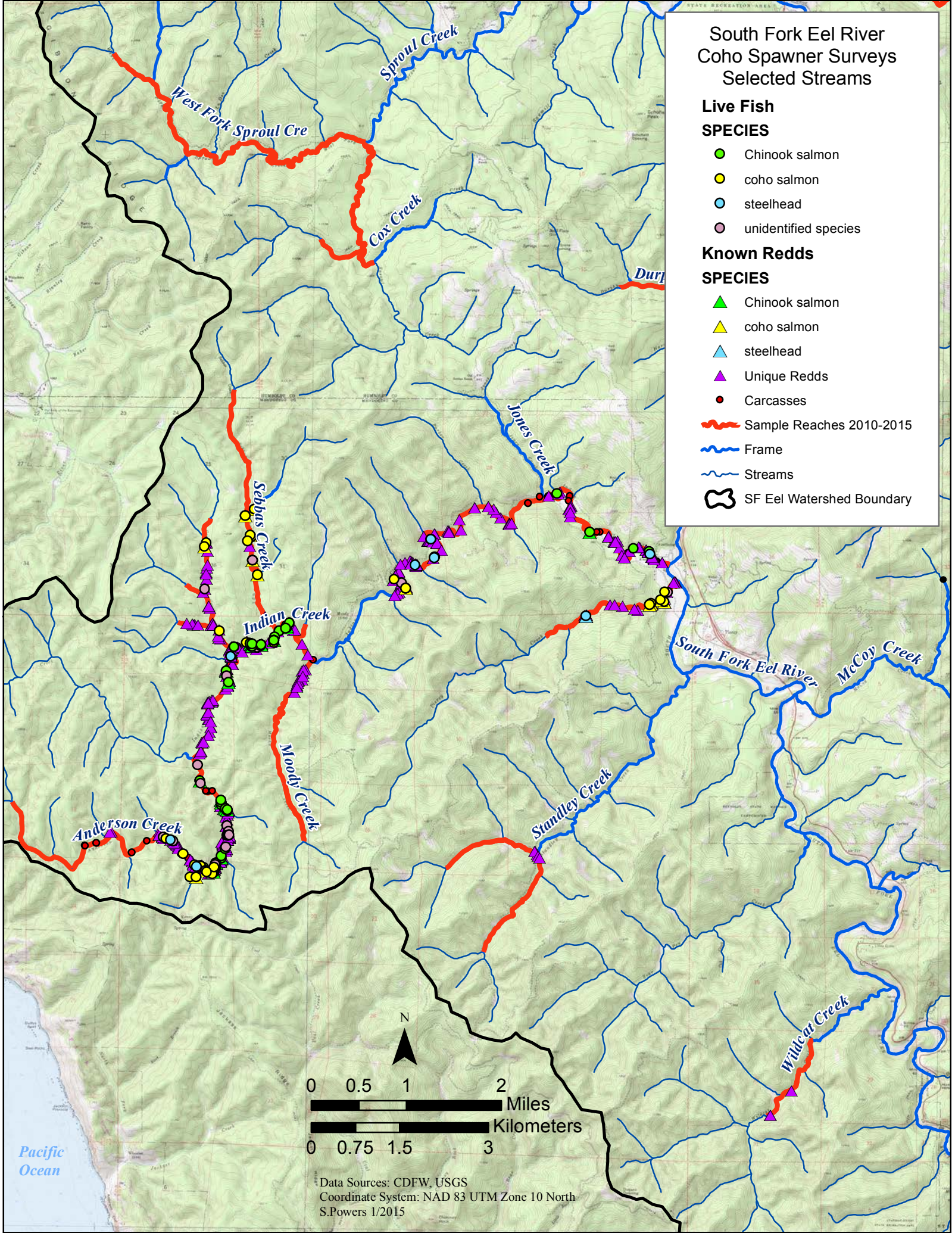
- ▲ Chinook salmon
- ▲ coho salmon
- ▲ steelhead
- ▲ Unique Redds
- Carcasses

— Sample Reaches 2010-2015

— Frame

— Streams

SF Eel Watershed Boundary



Data Sources: CDFW, USGS
 Coordinate System: NAD 83 UTM Zone 10 North
 S.Powers 1/2015